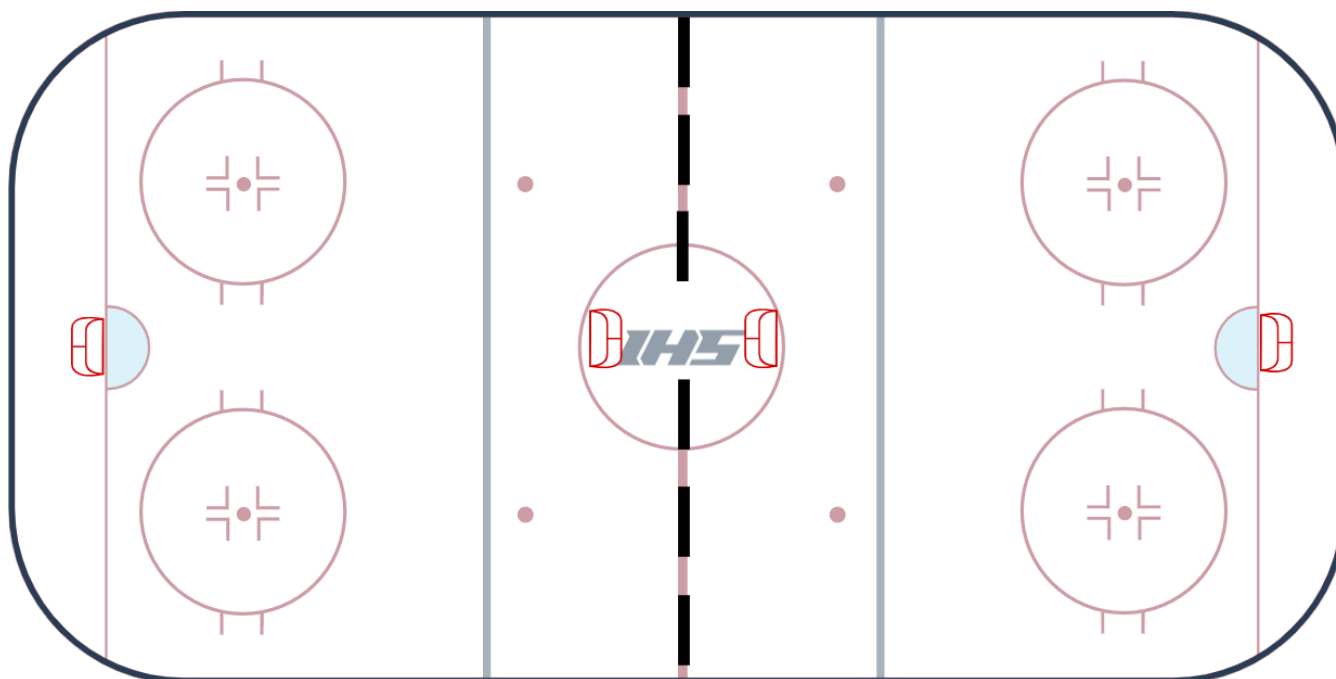


## Mite 2 - Mite 4 Games

---



### Description

---

Mite 2 - Mite 4 games should be played half ice. Games should be played with goalies and they should be 4v4 to 5v5. Please use intermediate nets when available. Full size nets are okay but are often too easy to score on. Intermediate nets force the shooters to work harder to score.

NOTE: Mite 3 and 4 will play 5-6 full ice games for 10U/Squirt Prep starting in mid-January.